



## Metro Transit Minnesota Project, November 2020

### Overview

NANOV DISPLAY provided the (10) single-sided and double-sided variable message signs to be installed at MSP International Airport Terminal 1, Lindbergh Station and Terminal 2, Humphrey Station, in Minneapolis, Minnesota to replace the existing displays.

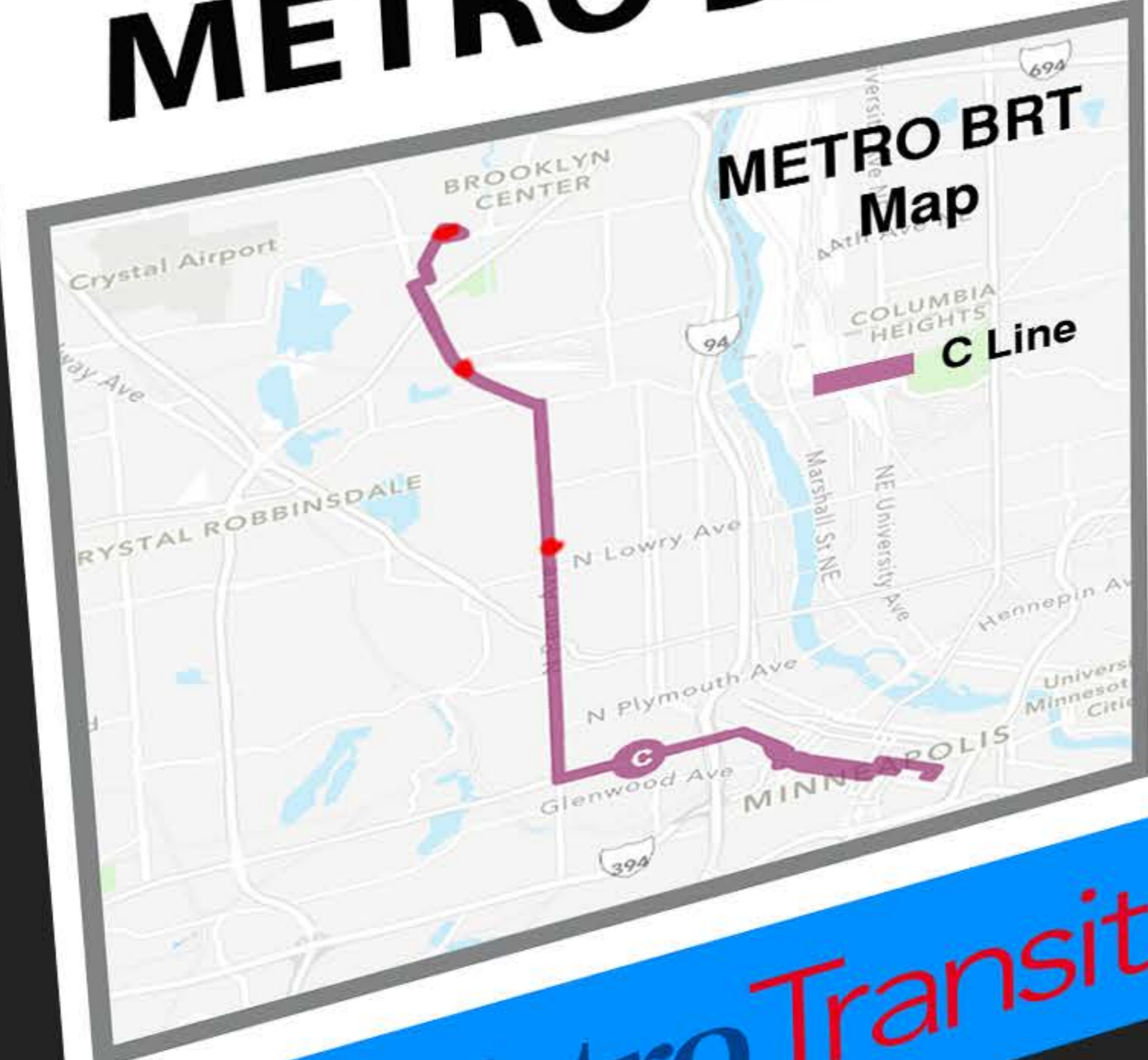
### Signage Model Name: NISSM-460LC-300-MSP and NISDM-460LC-325-MSP

The 46 inch single-sided and double-sided VMS include:

- Fully sealed enclosure
- Commercial, maintenance ready design with front opening door
- Vandal-proof, tamper-proof, anti-reflection glass
- Custom VESA 400 x 400 transit wall mount for single-sided units

# Brooklyn Center Transit Station

## METRO BRT



Line	Next Arrival
C	5:10 PM
C	5:20 PM
C	5:30 PM
C	5:40 PM

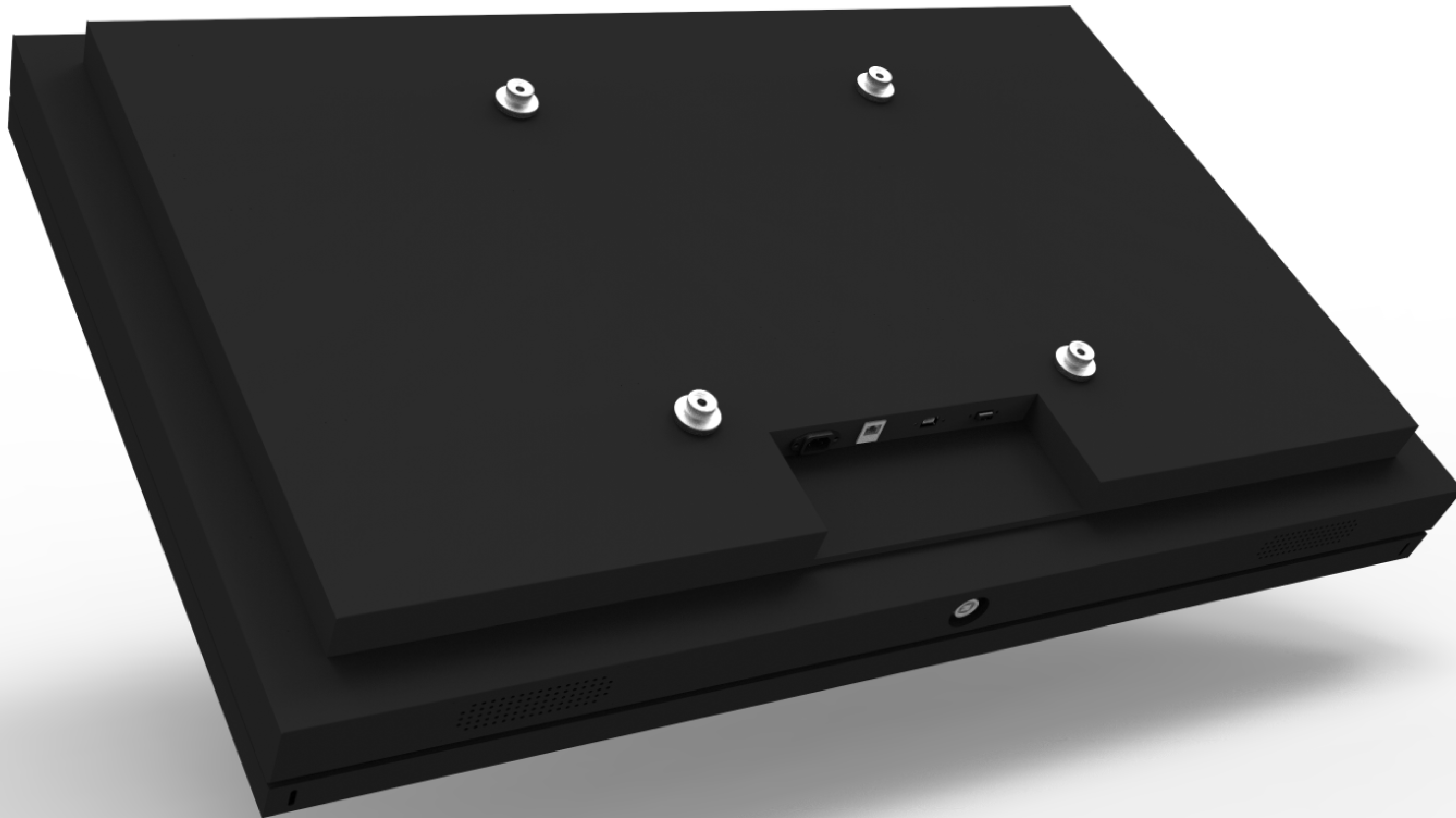
⚠ Expect delays on A Line



5:05 PM



65° F





Wi-Fi (TCONNECT)  
is available  
at this station

5:13 PM

FRI

27

SAT

29

SUN

30

501 Queen diverting eastbound via Spadina, King, Church due to a collision at Queen and Simcoe.